

WIENERSTRASSE 9, A-7082 DONNERSKIRCHEN

ÜBERSICHTSPLAN

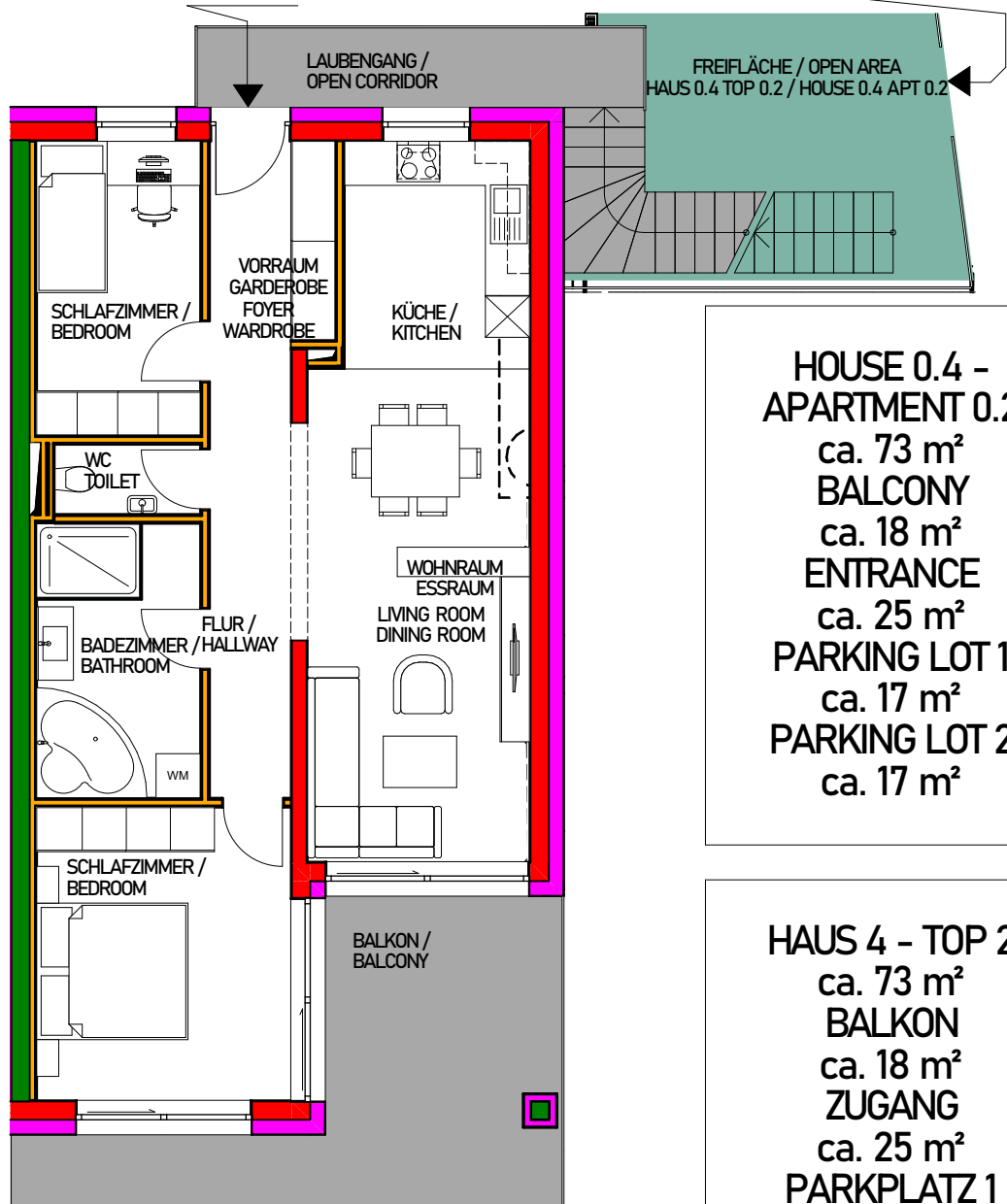
HAUS 0.4  
TOP 0.2 - 1.OBERGESCHOSS

LAYOUT

HOUSE 0.4  
APARTMENT 0.2 - SECOND FLOOR

ZUGANG / ENTRANCE  
HAUS 0.4 / HOUSE 0.4  
TOP 0.2 / APARTMENT 0.2

ZUGANG / ENTRANCE  
HAUS 0.4 / HOUSE 0.4  
TOP 0.2 / APARTMENT 0.2



HOUSE 0.4 -  
APARTMENT 0.2  
ca. 73 m<sup>2</sup>  
BALCONY  
ca. 18 m<sup>2</sup>  
ENTRANCE  
ca. 25 m<sup>2</sup>  
PARKING LOT 1  
ca. 17 m<sup>2</sup>  
PARKING LOT 2  
ca. 17 m<sup>2</sup>

HAUS 4 - TOP 2  
ca. 73 m<sup>2</sup>  
BALKON  
ca. 18 m<sup>2</sup>  
ZUGANG  
ca. 25 m<sup>2</sup>  
PARKPLATZ 1  
ca. 17 m<sup>2</sup>  
PARKPLATZ 2  
ca. 17 m<sup>2</sup>



*Terra Atlas*

IMMOBILIEN GMBH